



Simran Tools International

664, Military Road, Anand Parbat, New Delhi – 1100 05 (India).

E-mail : simrantools@vsnl.net

E-mail : info@simrantools.com

Website : www.simrantools.com

Mobile : 91-9313811414

Phone : 91-11-32913249

Fax : 91-11-25861340

Woodworking Tools

1. 5 Pc. Carpenter Hobby Tool Kit
2. Adjustable Bevels
3. Bevel Square (Cast Iron)
4. Carpenter Try Square
5. Marking Gauge
6. Breast Drill Machine
7. Hand Drill Machine
8. Wood Working Vice
9. Wood Saw
10. Miniature Chisel Tool Kit (H.S.S.)
11. Stainless Steel Chisels
12. Wood Working Chisels
13. Stainless Steel Gouges
14. Mitre Square
15. Paint Mixer
16. Prong Drive
17. Hobby Brass Plane
18. Lace Bobben Drive
19. Jack Plane (Sheeted)
20. Jack Plane
21. Block Plane (Cast Iron)
22. Block Plane (Sheeted)
23. T – Bar Cramps
24. G Clamps – Drop Forged
25. G Clamps – Ductile

1. 5 PC. CARPENTER HOBBY TOOL KIT



- Packed in Wooden Box.
- Assorted Items which is most commonly used.

ITEM NO. - SCT-4651



2. ADJUSTABLE BEVELS



- Blade is Blacked.
- For use on inside or outside corners for perfect layout.

ITEM NO.	RANGE	
	INCH	MM
SAB-4655	3	75
SAB-4656	7-1/2	190
SAB-4657	9	225
SAB-4658	10	250
SAB-4659	10-1/2	265

3. BEVEL SQUARE (Cast Iron)



- Cast Iron.
- With Wing Nut.
- Finish : Self / Painted.

ITEM NO.	SIZE	
	MM	INCH
SBS-4671	150	6
SBS-4672	200	8
SBS-4673	250	10
SBS-4674	300	12

While Placing Order Please Mention Finish

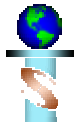
4. CARPENTER TRY SQUARE

(A) WOODEN BASE

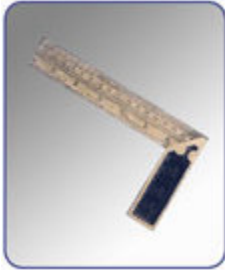


- Best Quality TRY SQUARE with Brass Faced Polished Wood Stock.
- Chemically Blacked Steel Blade Fixed with Three Brass Rivets.
- Precision In Accuracy.

ITEM NO.	BLADES	
	INCH	MM
SCT-4681	3	75
SCT-4682	6	150
SCT-4683	9	225
SCT-4684	12	300



(B) CAST IRON



- Carbon Steel Blades.
- Graduate in Cms / Inches.
- Made of Cast Iron.
- Graduation available on Single side / Both side.

ITEM NO.	BLADES	
	INCH	MM
SCT-4691	6	150
SCT-4692	8	200
SCT-4693	9	225
SCT-4694	10	250
SCT-4695	12	300
SCT-4696	14	350
SCT-4697	16	400
SCT-4698	18	450

While Placing Order Please Mention Graduation On Single Side or Both Side

5. MARKING GAUGE



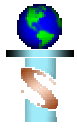
- Made from Polished Wood.
- Single Hardened Marking Spur.
- Plastic Turn Screw.

ITEM NO.	BLADE	
	INCH	MM
SMG-4711	3	75
SMG-4712	6	150
SMG-4713	9-3/16	230

6. BREAST DRILL MACHINE



ITEM NO.	SIZE	SIZE
	INCH	MM
SBD-4721	3/8	10
SBD-4722	1/2	12



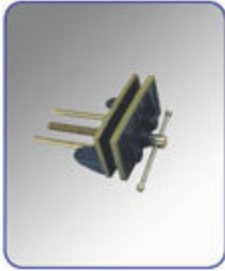
7. HAND DRILL MACHINE



- Cast Iron body.
- Double Pinion with wooden handle.

ITEM NO.	SIZE	
	INCH	MM
SHD-4725	1/4	6
SHD-4726	5/16	8
SHD-4727	3/8	10

8. WOOD WORKING VICE



- Cast Iron Frame with Steel Spindle.

ITEM NO.	SIZE	
	MM	INCH
SWW-4741	150	6
SWW-4742	175	7
SWW-4743	200	8
SWW-4744	225	9
SWW-4745	250	10
SWW-4746	300	12

9. WOOD SAW



- Die Moulded Plastic Handle.
- Available with or without Handle.

ITEM NO.		SIZE	
WITH HANDLE	WITHOUT HANDLE	MM	INCH
SWS-4751	SWS-4752	300	12



10. MINIATURE CHISEL TOOL KIT (H.S.S.)



- Set of 5 Pc. Packed in Wooden Box.

ITEM NO. - SMC-4755

11. STAINLESS STEEL CHISELS



- Set of 3 Pcs.
- Made of Stainless Steel.
- Hardened and Ground.

ITEM NO. - SSC-4760

12. WOOD WORKING CHISELS



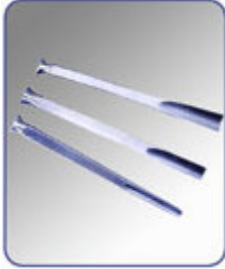
- Blade size marked for easy user selection.
- Beveled Blade can be re-sharpened.
- Blade Forged from Top Quality Chrome Vanadium Steel.
- Accurately hardened tempered and ground on all faces and edges.

ITEM NO.	BLADE WIDTH	
	MM	INCH
SWO-4772	6	1/4
SWO-4773	8	5/16
SWO-4774	10	3/8
SWO-4775	12	15/32
SWO-4776	13	1/2
SWO-4777	14	9/16
SWO-4778	16	5/8
SWO-4779	18	23/32
SWO-4780	19	3/4
SWO-4781	20	25/32
SWO-4782	22	7/8
SWO-4783	24	15/16
SWO-4784	25	1
SWO-4785	26	1-1/32
SWO-4786	28	1-7/64
SWO-4787	30	1-3/16
SWO-4788	32	1-1/4



SWO-4789	36	1-13/32
SWO-4790	38	1-1/2
SWO-4795	A set of three containing one each of 1/2" (13mm), 3/4" (19mm) & 1" (25mm) Chisels	
SWO-4796	A set of four containing one each of 1/4" (6mm), 1/2" (13mm), 3/4" (19mm) & 1" (25mm) Chisels	
SWO-4797	A set of five containing one each of 1/4" (6mm), 3/8" (10mm), 1/2" (13mm), 3/4" (19mm) & 1" (25mm) Chisels	
SWO-4798	A set of six containing one each of 1/4" (6mm), 3/8" (10mm), 1/2" (13mm), 3/4" (19mm), 1" (25mm) & 1-1/4" (32mm) Chisels	

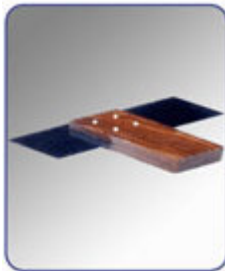
13. STAINLESS STEEL GOUGES



- Set of 3 Pc.
- Made of Stainless Steel.
- Hardened and Ground.

ITEM NO. - SGS-4810

14. MITRE SQUARE



- Polished Wood Stock.
- Blacked Steel Blade with 45° Angle Both Side.
- Fixed with Four Brass Rivets.

ITEM NO.	BLADE	
	INCH	MM
SSM-4815	1	25
SSM-4816	1-3/16	30

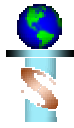
15. PAINT MIXER



- Made out of Steel Sheet.
- Available in many colours.

ITEM NO.	SIZE (MM)
SPM-4821	60 x 400
SPM-4822	80 x 400

While Placing Order Please Mention Colour



16. PRONG DRIVE



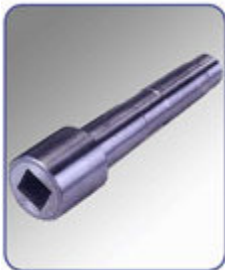
ITEM NO.	SIZE
SPD-4825	MT1
SPD-4826	MT2

17. HOBBY BRASS PLANE



ITEM NO.	ITEM
SHB-4831	Block
SHB-4832	Scraper
SHB-4833	Bull Nose

18. LACE BOBBEN DRIVE



ITEM NO.	SIZE
SLB-4841	MT1
SLB-4842	MT2



19. JACK PLANE (Sheeted)



- Sheet Fabricated with Carbon Steel Blade.

ITEM NO.	SIZE		
	INCH	MM	NO.
SPS-4850	9-3/4	245	4

20. JACK PLANE



- Cast Iron Body.
- Engineered for high precision.
- Blades made of Alloy Steel, Hardened and Ground.
- Available in Plain & Corrugated Base.

ITEM NO.	SIZE		
	INCH	MM	NO.
SJP-4862	9	225	3
SJP-4863	9-3/4	245	4
SJP-4864	14	350	5
SJP-4865	18	450	6
SJP-4867	21	525	7

While Placing Order Please Mention Plain Base or Corrugated Base

21. BLOCK PLANE (Cast Iron)



- Cast Iron Body.
- Carbon Steel Blade (Hardened & Tempered).
- Bottom Perfectly Machined.
- Available with or without knob.

ITEM NO.	SIZE	
	MM	INCH
SBP-4875	125	5
SBP-4877	175	7

While Placing Order Please Mention With Knob or Without Knob



22. BLOCK PLANE (Sheeted)



- Sheet Fabricated with Carbon Steel Blade.

ITEM NO.	SIZE	
	MM	INCH
SPS-4885	125	5
SPS-4886	175	7

23. T - BAR CRAMPS



- Steel Frame.
- Available in Cast Iron Jaws and Malleable Jaws.
- Acme thread for smooth running.

ITEM NO.	RANGE	
	MM	FEET
STB-4911	600	2
STB-4912	750	2-1/2
STB-4913	900	3
STB-4914	1050	3-1/2
STB-4915	1200	4
STB-4916	1350	4-1/2
STB-4917	1500	5
STB-4918	1650	5-1/2
STB-4919	1800	6
STB-4920	1950	6-1/2
STB-4921	2100	7
STB-4922	2400	8

While Placing Order Please Mention Cast Iron Jaws or Malleable Steel Jaws



24. G CLAMPS - DROP FORGED



- Drop forged steel clamp with strong ribbed body.

ITEM NO.	THROAT CAPACITY	
	INCH	MM
SCL-4931	2	50
SCL-4932	3	75
SCL-4933	4	100
SCL-4934	6	150
SCL-4935	8	200

25. G CLAMPS – DUCTILE



- Frame made from Ductile Cast Iron.
- Steel Screws with Sliding T Bar handle and Swivel Shoes.

ITEM NO.	CAPACITY	
	INCH	MM
SGD-4961	3	75
SGD-4962	4	100
SGD-4963	6	150
SGD-4964	8	200
SGD-4965	10	250
SGD-4966	12	300